

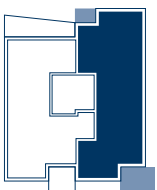
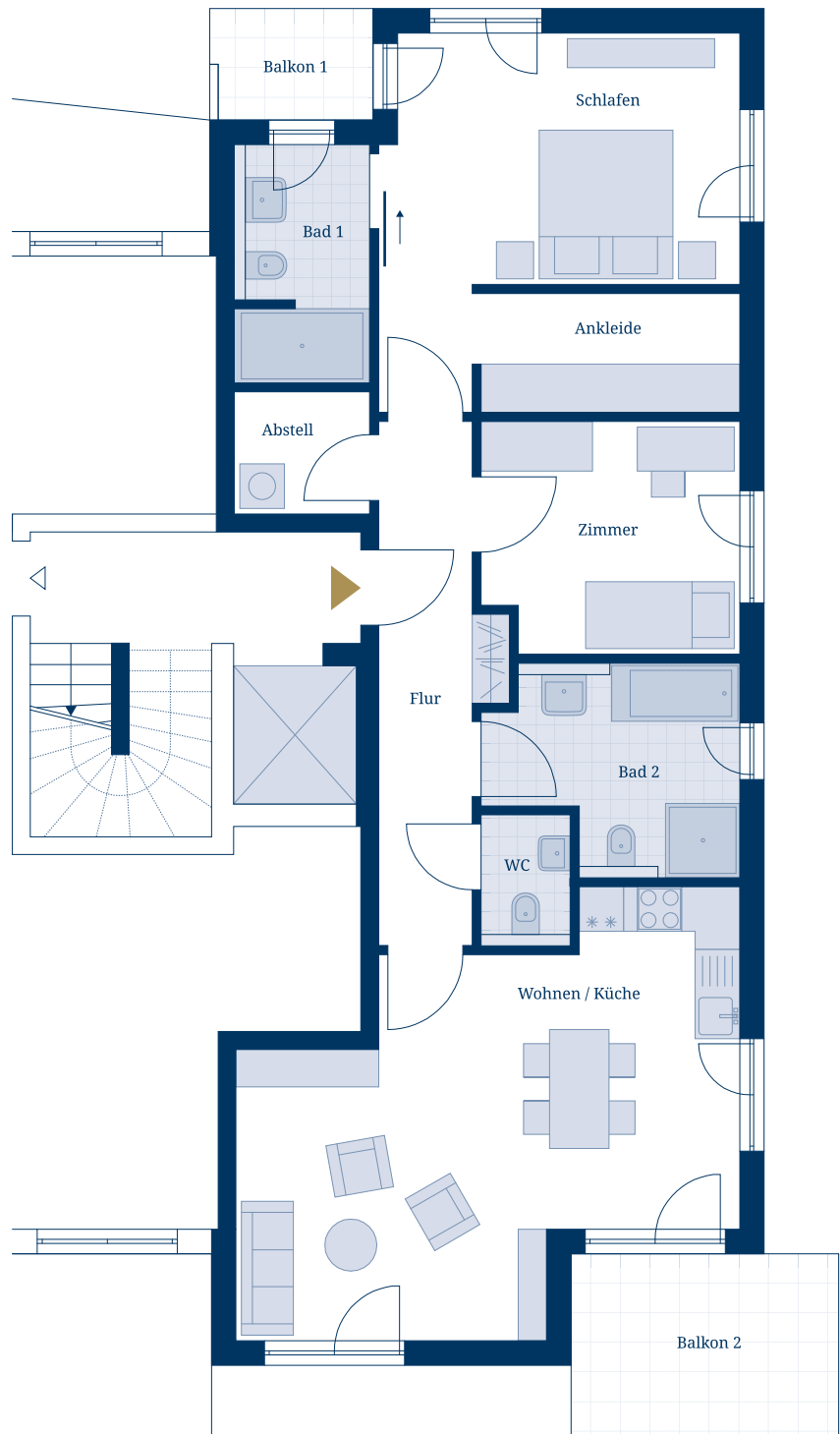
# W19 HAUS B - WE 09

1.OG rechts

3-Zimmer-Wohnung | ca. 100,26m<sup>2</sup>

Wohnen / Küche	30,85m <sup>2</sup>
Zimmer	10,58m <sup>2</sup>
Schlafen	18,24m <sup>2</sup>
Ankleide	5,68m <sup>2</sup>
Bad 1	5,76m <sup>2</sup>
Bad 2	8,44m <sup>2</sup>
WC	2,11m <sup>2</sup>
Abstell	3,00m <sup>2</sup>
Flur	9,49m <sup>2</sup>
Balkon 1 (50%)	1,61m <sup>2</sup>
Balkon 2 (50%)	4,50m <sup>2</sup>

**GESAMTFLÄCHE ca. 100,26m<sup>2</sup>**



M 1:100